

# GUARDSHACK™

Enclosures That Work Beautifully

## SMALL ENCLOSURES

### PIONEERING BEAUTIFUL DESIGN

The original GuardShack™ line of enclosures has been manufactured in the USA since 1995. Its signature rounded design, provides superior strength and safety without any sharp corners. Our pioneering, beautiful design, is safe for children and pedestrians.

They come in Lift-Off and Hinged Models



GS-1  
Shown w/ EncPad Base

### CONSTRUCTION

Our rugged construction deters vandalism and theft of your backflow, air vacuum or other valuable devices. The GuardShack series is always constructed of strong 1-1/4" Schedule 40 pipe & 1/2" #13 gauge expanded metal.

They are meticulously welded every 4 inches and exceeds ASSE Structural Strength Standards.

### LASTING DURABILITY

These enclosures are professionally cleaned and powder coated to exacting standards for lasting durability, in environmentally friendly premium finishes.

Standard colors for these models are in high gloss Woodland Tan & Forest Green which were selected to blend into most any landscaping.

Custom colors are available

### SECURITY AND HARDWARE

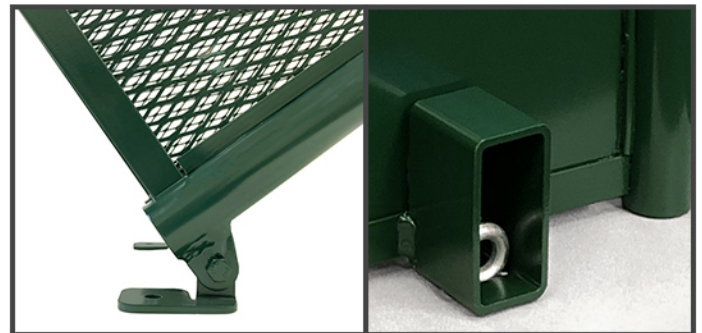
For added security, these cages come standard with LockShield™ Brackets which protect the locks against bolt cutters.

Installation hardware is included for wet concrete installation (lift off models) or dry concrete installation (hinged models) and for use with our Pre-Fab EncPad™ Enclosure Pads.

Our hardware kits include upgraded Forged Hot Dipped Galvanized Eyebolts for added theft resistance.



GS-3 Model  
Hinged To Mitigate Weight



Our custom made heavy duty hinges are cut from 3/16" steel plate and utilize a stainless steel bolt to prevent from rusting.

Lock Shield Brackets rest flush on the concrete to protect the forged eyebolts and padlocks against bolt cutters.

1-800-266-5411

[www.GuardShackEnclosures.com](http://www.GuardShackEnclosures.com)

# ADDITIONAL INFORMATION & SPECIFICATIONS



GS-1  
WOODLAND TAN

## STANDARD SIZES

Model	Type	Internal Dimensions W x H x L	EncPad™ Sold Separately	FrostGuard™ Sold Separately
GS-.5	Lift-Off	10" x 18" x 12"	N/A	N/A
GS-1	Lift-Off	10" x 24" x 22"	EP-1	FG-1
GS-2	Lift-Off	10" x 24" x 30"	EP-2	FG-2
GS-3	Hinged	10" x 24" x 40"	EP-3	FG-3
GS-3.3	Lift-Off	16" x 30" x 30"	N/A	FG-3.3
GS-4	Hinged	16" x 30 x 46"	N/A	FG-4

## FABRICATION & POWDER COAT SPECIFICATIONS

Materials: GuardShacks are made of 1¼" Schedule 40 pipe A.S.T.M. A-53 grade all electric weld steel for end frames, 1" x 1" x 1/8" steel angle iron, ½"#13 gauge diamond pattern flat rolled expanded steel with all welded construction 4" O/C expanded metal die formed for uniformity. Welds every 4" to exceed ASSE 1060-98 Structural Strength Standards.

Powdercoating: State-of-the-art aeronautics industry five step metal cleaning process and iron phosphate solution treatment. Units preheated before applying 2-4 mil thickness polyester powder to A.S.T.M. D-2794 Impact Resistant and A.T.S.M. D-3359 Adhesive Specifications

## 2-Year Manufacturer's Warranty

Warranty: GuardShack Products warranties this product for two (2) years from the date of purchase to be free of defects in material and workmanship. All claims must be made known to GuardShack Products in writing within 30 days of the defect becoming known to the purchaser. There are no warranties that extend beyond those described herein, either expressed or implied. GuardShack Products reserves the sole right, at its own option to repair or replace any defective product, and shall exclude any damage caused by accident, misuse or abuse of the product.

In no case shall Guardshack Products be liable for any incidental or consequential damages what-so-ever.

## INSULATION PROTECTION

Protect against unexpected cold snaps which could cause costly repairs to your backflow assemblies.

FrostGuard™ Insulated Blankets come in R13 or R30 insulation values to help protect 2" and under backflow assemblies.

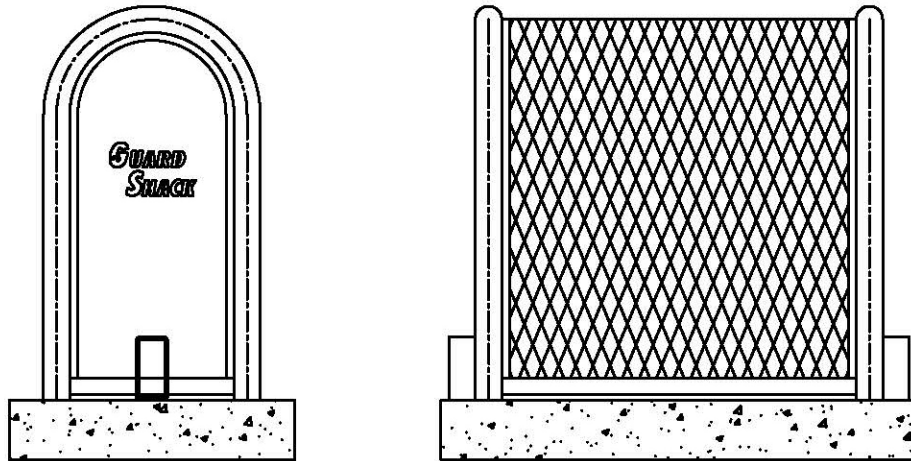
Our blankets are made of heavy UV resistant vinyl and designed to leave on year round. Available in Tan or Green.



1-800-266-5411

[www.GuardShackEnclosures.com](http://www.GuardShackEnclosures.com)

## STANDARD GUARDSHACK™ ENCLOSURES



### GUARDSHACK™ GENERAL SPECIFICATIONS

- All pipe shall be 1 ¼" schedule 40 A.S.T.M. A-53 Grade A- Electric Weld pipe.
- Angle Iron shall be 1" x 1" x 1/8" steel.
- Stainless steel units shall be 1 ¼" schedule 10 A.S.T. M. A-312 304 S.S.
- Expanded metal shall be 1/2" spacing x # 13 Ga. flattened diamond pattern steel.
- All stainless steel shall be sandblasted after fabrication to remove burrs, flashing and sharp edges.
- There shall be no exposed ends of expanded metal on the outside of the enclosure.
- Welding shall be a minimum of 1/4" long welds on 4" spacing.
- Standard Lock Shield Brackets shall be welded on each end of lift off enclosures.
- Hardware kits provided for mounting enclosures.
- On 304 S.S. units, all hinges, exposed hardware, and brackets shall be 304 S.S.
- All hardware shall be securely attached to enclosures. See HK-100 for hardware specifications.
- All enclosures shall withstand a minimum of 200 lbs. per square foot without any permanent deflection or distortion.
- 3/8" spacing between angle iron framework of enclosure and slab to prevent rusting. Only pipe ends to touch slab.

## STANDARD GUARDSHACK™ AND COAST GUARDSHACK™ SIZES INTERNAL DIMENSIONS

GS - .5	10" W x 18" H x 12" L	Lift-Off
GS - 1	10" W x 24" H x 22" L	Lift-Off
GS - 2	10" W x 24" H x 30" L	Lift-Off
GS - 3.3	16" W x 30" H x 30" L	Lift-Off

For 304 S. S. , order as CGS using same model #

### POWDERCOATED UNITS

#### Pre-powdercoat Treatment Process

Clean GuardShack™ unit with a S-44 alkaline cleaner, overflow rinse, apply an AC-8115 iron phosphate treatment, overflow rinse and finish with a #198 sealer rinse to prevent rusting and improve adhesion.

#### Powdercoat Treatment Process

Units shall be preheated and coated by electrostatic application of 2.0 to 3.5 mil thickness on all surfaces. Powder shall be RAL 1019 Woodlands Tan or TCI 8810-6058 Forest Green or approved equal Impact Resistance Finish 160 inch pounds direct 160 inch pounds reverse, per ASTM D-2794 specs. Gloss Finish >85, per ASTM D-523. Adhesion to be rated excellent when tested to ASTM D-3359 standards.

### STAINLESS STEEL ELECTRO-POLISH FINISH

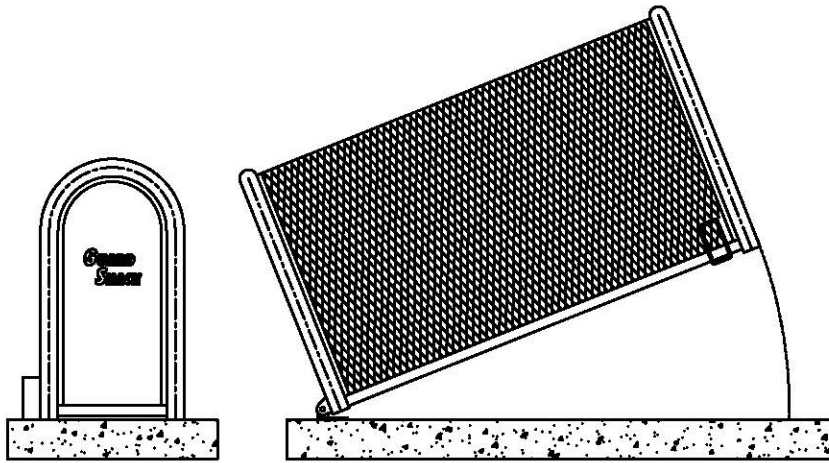
All 304 Stainless Steel units shall be chemically electro-polished to impart a lustrous finish to the unit.

GuardShack Products, LLC.  
3831 E. GROVE STREET  
PHOENIX, ARIZONA 85040 (602) 426-1002

## GENERAL SPECIFICATIONS FOR STANDARD GUARDSHACK™ ENCLOSURES

SCALE: NTS  
DETAIL NO.  
GSP- LIFT-OFF  
REV. 0

## STANDARD GUARDSHACK™ ENCLOSURES



### GUARDSHACK™ GENERAL SPECIFICATIONS

- All pipe shall be 1 ¼" schedule 40 A.S.T.M. A-53 Grade A- Electric Weld pipe.
- Angle Iron shall be 1" x 1" x 1/8" steel.
- Stainless steel units shall be 1 ¼" schedule 10 A.S.T. M. A-312 304 S.S.
- Expanded metal shall be 1/2" spacing x # 13 Ga. flattened diamond pattern steel.
- All hinges shall have hidden/internal mounting points.
- All stainless steel shall be sandblasted after fabrication to remove burrs, flashing and sharp edges.
- There shall be no exposed ends of expanded metal on the outside of the enclosure.
- Welding shall be a minimum of 1/4" long welds on 4" spacing.
- One Lock Shield Bracket on hinged units shall be welded on end opposite hinges.
- Hardware kits provided for mounting enclosures.
- On 304 S.S. units, all hinges, exposed hardware, and brackets shall be 304 S.S.
- All hardware shall be securely attached to enclosures. See HK-200 for hardware specifications.
- All enclosures shall withstand a minimum of 200 lbs. per square foot without any permanent deflection or distortion.
- 3/8" spacing between angle iron framework of enclosure and slab to prevent rusting. Only pipe ends to touch slab.

## STANDARD GUARDSHACK™ AND COAST GUARDSHACK™ SIZES INTERNAL DIMENSIONS

GS - 3	10" W x 24" H x 40" L	HINGED
GS - 4	16" W x 30" H x 46" L	HINGED

For 304 S. S. , order as CGS using same model #

### POWDERCOATED UNITS

#### Pre-powdercoat Treatment Process

Clean GuardShack™ unit with a S-44 alkaline cleaner, overflow rinse, apply an AC-8115 iron phosphate treatment, overflow rinse and finish with a #198 sealer rinse to prevent rusting and improve adhesion.

#### Powdercoat Treatment Process

Units shall be preheated and coated by electrostatic application of 2.0 to 3.5 mil thickness on all surfaces. Powder shall be RAL 1019 Woodlands Tan or TCI 8810-6058 Forest Green or approved equal Impact Resistance Finish 160 inch pounds direct 160 inch pounds reverse, per ASTM D-2794 specs. Gloss Finish >85, per ASTM D-523. Adhesion to be rated excellent when tested to ASTM D-3359 standards.

### STAINLESS STEEL ELECTRO-POLISH FINISH

All 304 Stainless Steel units shall be chemically electro-polished to impart a lustrous finish to the unit.

GuardShack Products, LLC.  
3831 E. GROVE STREET  
PHOENIX, ARIZONA 85040 (602) 426-1002

## GENERAL SPECIFICATIONS FOR STANDARD GUARDSHACK™ ENCLOSURES

SCALE: NTS  
DETAIL NO.  
GSP- HINGED  
REV. 0